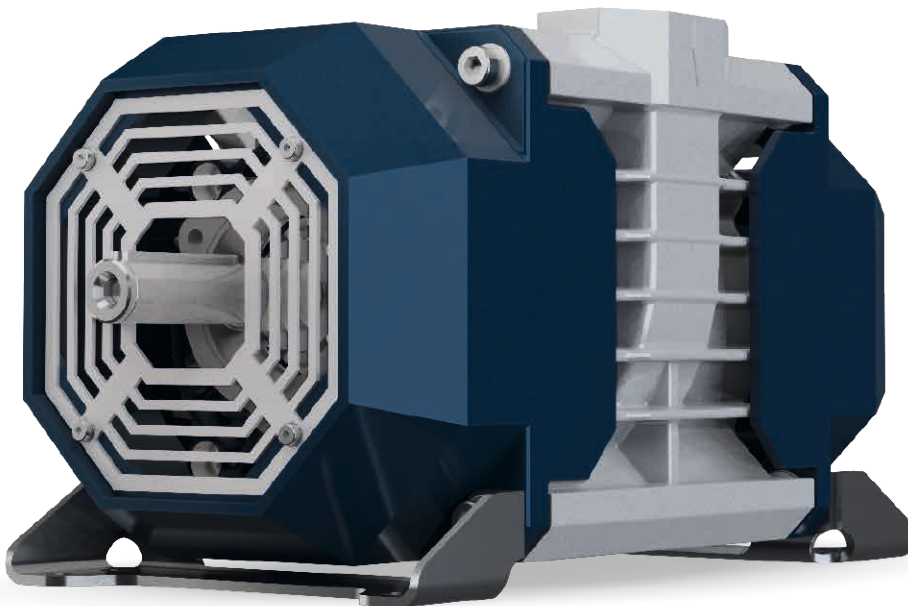


Data sheet

Rotary vane compressor
for liquid tankers



RKL 160

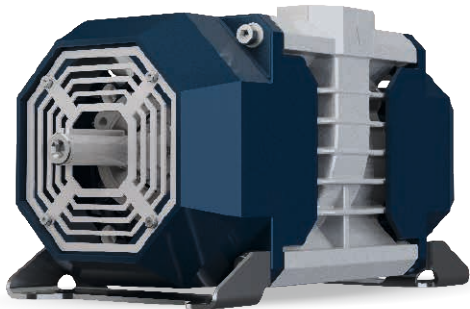
Rotary vane compressor

- Overview page 2
- Dimensions page 4
- Features page 3
- Technical data page 4

RKL 160

Rotary vane compressor

Overview



CVS develops and manufactures compressors specifically designed for installation in trucks. The development is made in close collaboration with our customers. This guarantees the optimum product for your application.

The oil free rotary vane compressor

The oil free compressor RKL was developed specifically for high requirements on mounting in liquid tankers.

Contact person



Roger Homberger

Head of Sales

+49 (0) 7623 71 741-24

+49 (0) 151 72 13 01 81

roger.homberger@cvS-eng.de



Patrick Zettler

Sales

+49 (0) 7623 71 741-23

+49 (0) 162 25 25 694

patrick.zettler@cvS-eng.de



Helen Kreissl

Internal Sales

+49 (0) 7623 71 741-21

helen.kreissl@cvS-eng.de

RKL 160

Rotary vane compressor

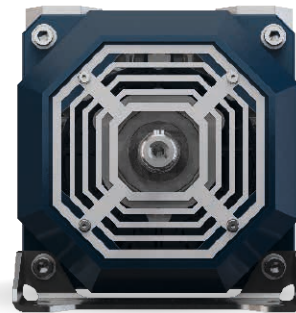
■ Features

- High quality compressors from CVS for reliable discharge
- Durable and robust design guarantee long lasting performance and high operating hours
- Compact and light-weight design for higher payload on the tanker

Compressors with system

The compressor RKL delivers a volume flow between 116 up to 154 m³/h / 92 –123 cfm. An efficient cooling system of the RKL 160 ensures improved service life.

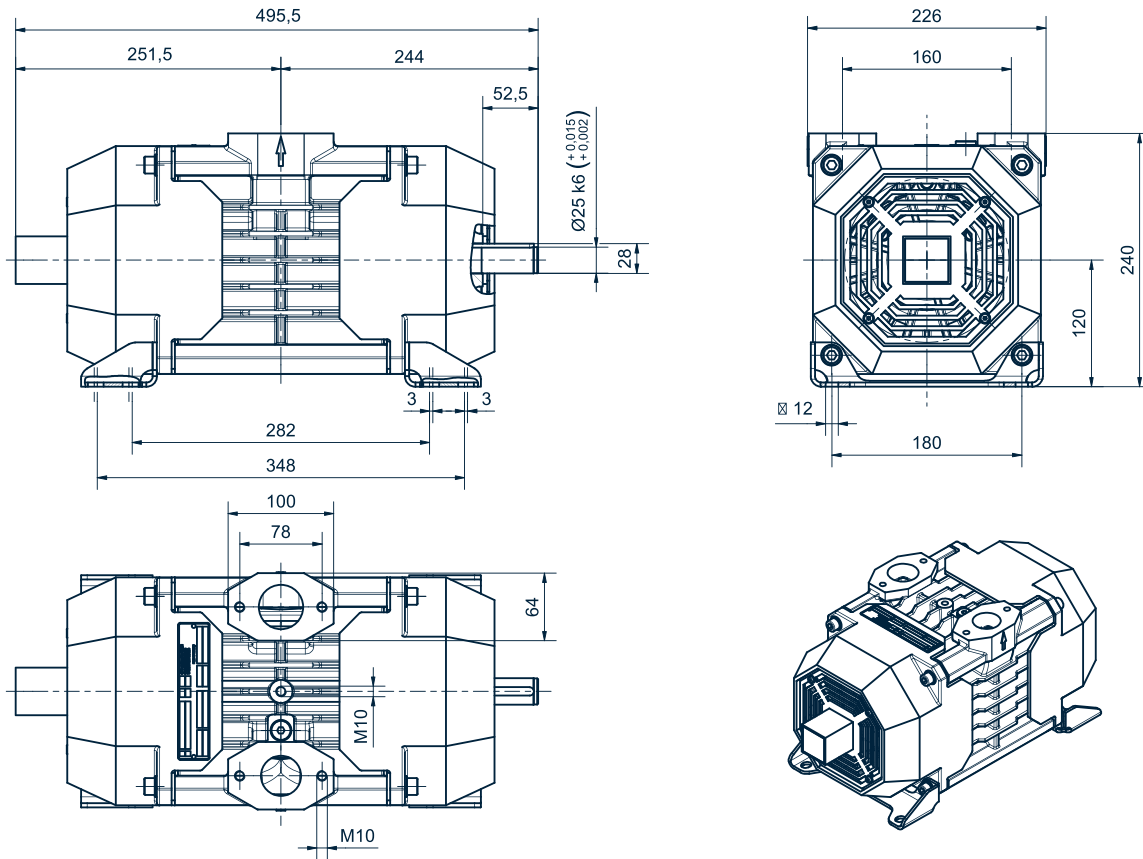
Technical subject to alteration



■ Advantages

- Variable mounting brackets
- Optimized cooling
- Clockwise or counter-clockwise rotation
- Low weight
- Compact design
- Variable position from suction and pressure flange
- Drive via hydraulic motor or directly via caran shaft possible
- Permanent lubrication for bearings
- 2.5 bar g (35.5 psig) operating pressure for the complete speed range possible
- Fan and fan cover made of aluminium

■ Dimensions



■ Technical data

		RKL 160
Suction volume flow at free air delivery	m³/h / cfm	116 – 154 / 68 – 91
Suction volume flow at 2 bar g / 28.4 psig	m³/h / cfm	92 – 123 / 54 – 72
Max. over pressure	bar g / psig	2.5 / 35.5
Speed range	rpm	1200 – 1600
Power requirement at 2 bar g / 28.4 psig	kW / hp	6.5 – 8.6 / 8.9 – 11.7
Weight	kg / lb	33 / 73

Technical subject to alteration