

Data sheet

Screw compressor
for bulk trucks



SKL 700 – 1100

Screw compressor

- Overview page 2
- Dimensions page 4
- Features page 3
- Technical data page 4 + 5

SKL 700 – 1100

Screw compressor

Overview



CVS develops and manufactures compressors specifically designed for installation in trucks. The development is made in close collaboration with our customers. This guarantees the optimum product for your application.

The oil free screw compressor

The oil free screw compressor SKL was developed especially for the high requirements on mounting in bulk trucks.

Contact person



Roger Homberger

Head of Sales

+49 (0) 7623 71 741-24

+49 (0) 151 72 13 01 81

roger.homberger@cv-eng.de



Patrick Zettler

Sales

+49 (0) 7623 71 741-23

+49 (0) 162 25 25 694

patrick.zettler@cv-eng.de



Helen Kreissl

Internal Sales

+49 (0) 7623 71 741-21

helen.kreissl@cv-eng.de

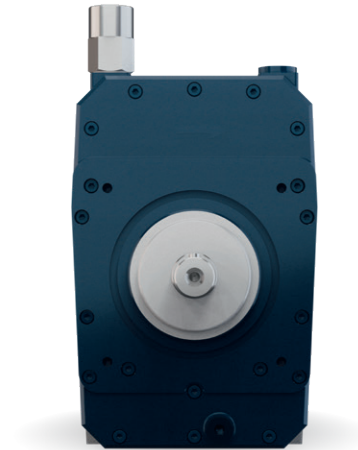
■ Features

- High quality screw compressors from CVS for reliable discharge
- Unique and robust design guarantee long lasting performance and high operating hours
- Compact and light-weight design for higher payload on the tanker

Screw compressors with system

The volume flow rate of the SKL ranges from 385 up to 1050 m³/h at input drive speeds of 2000 (SKL 1100) resp. 2400 (SKL 700) up to 3600 rpm. The especially developed design of screw ensures increased efficiency and low discharge air temperatures with low noise operation.

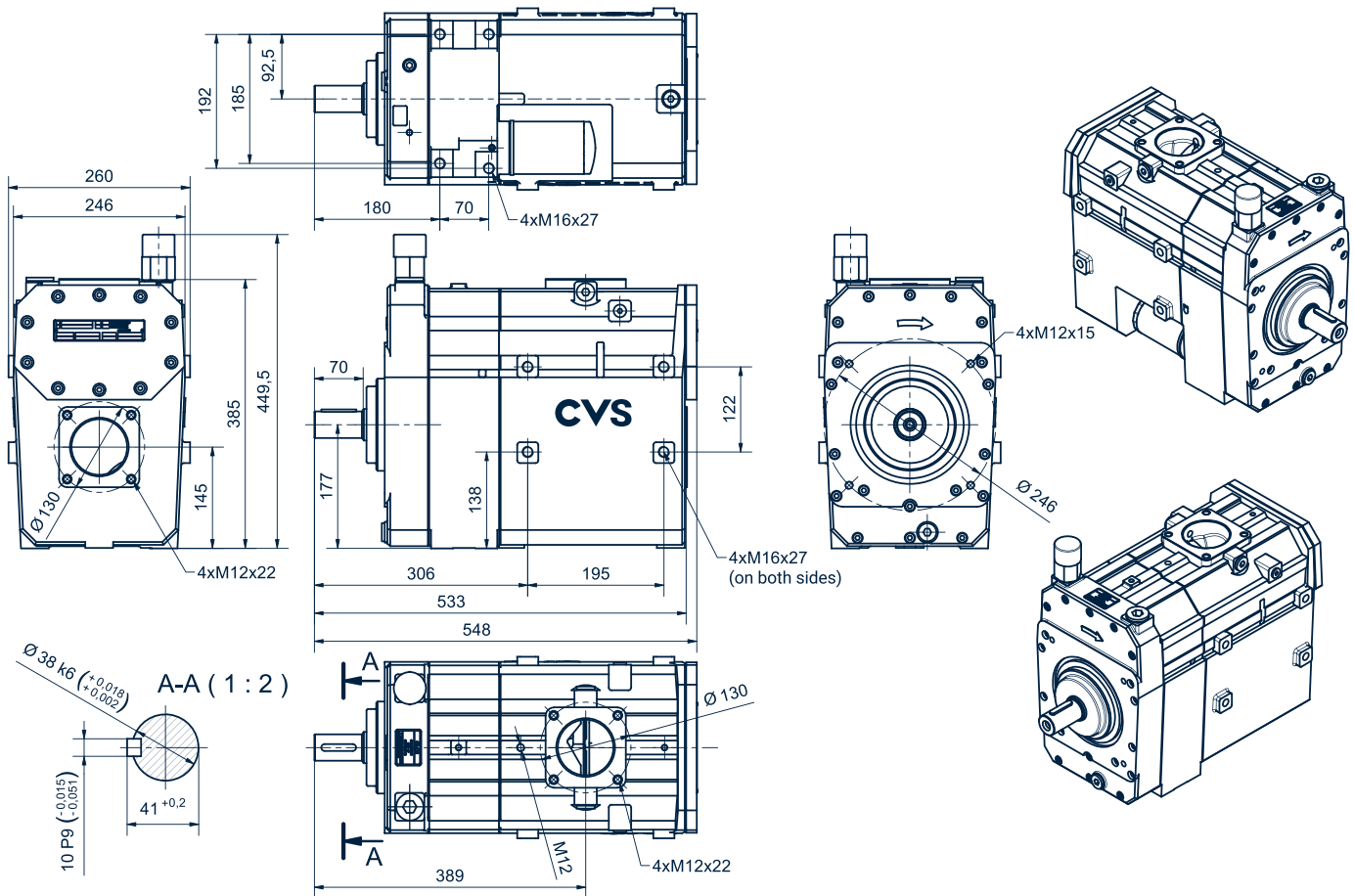
Technical subject to alteration



■ Advantages

- High quality robust design guarantees long lasting performance and longer operating life
- Low weight
- Extensive speed range allows greater flexibility and maximum performance
- 2.5 bar operating pressure over full speed range
- Compact design for ease of installation
- Integrated lubricating oil pump and easy-to-change oil filter

■ Dimensions

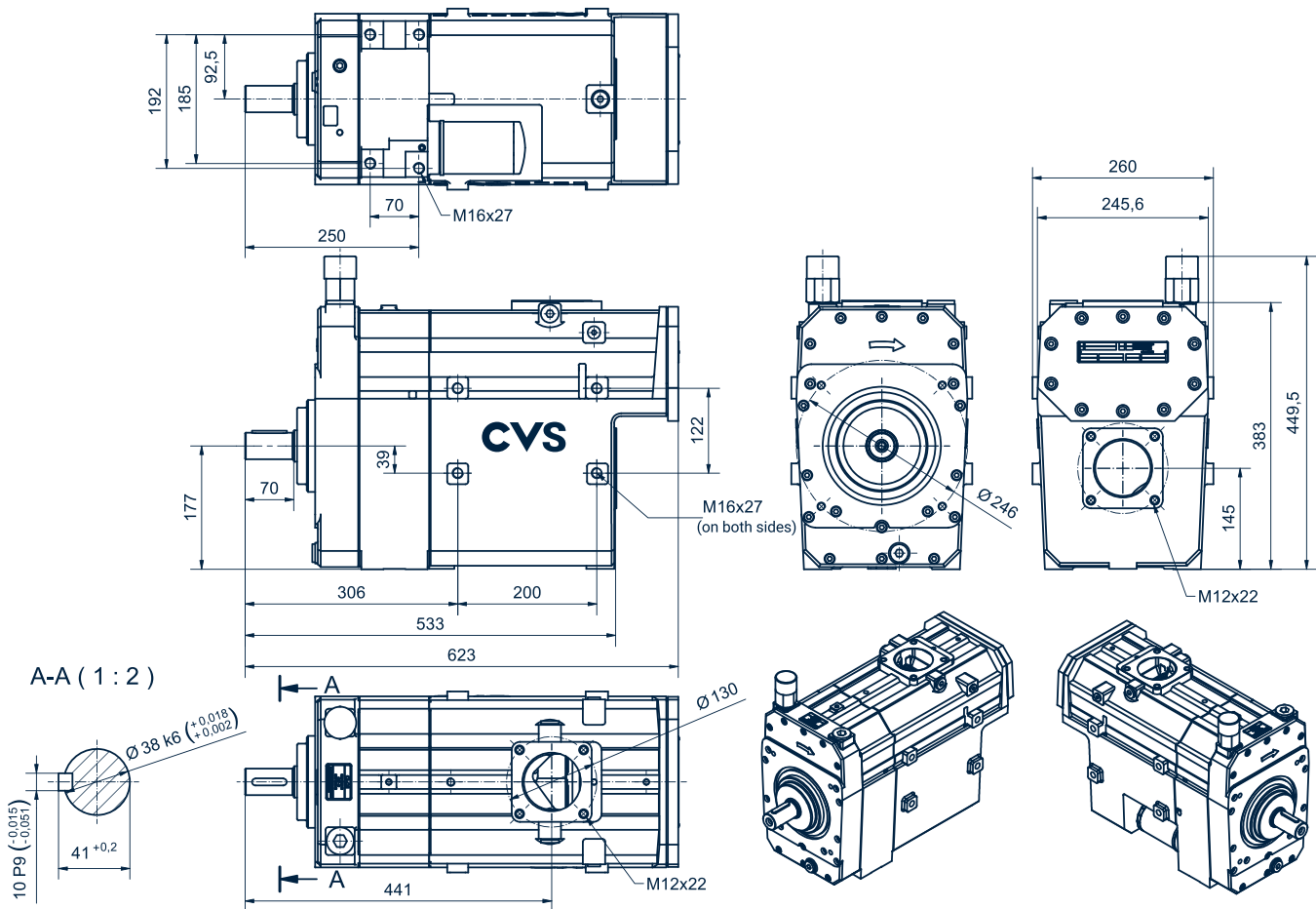


■ Technical data

		SKL 700		
With speed	rpm	2400	3000	3600
Suction volume flow at free air delivery	m³/h	420	540	650
Suction volume flow at 2 bar g	m³/h	385	485	600
Max. over pressure	bar g	2.5	2.5	2.5
Speed range	rpm	2400 – 3600		
Power requirement at 2 bar g	kW	22.5	28.0	33.5
Weight	kg	114		

Technical subject to alteration

■ Dimensions



■ Technical data

		SKL 1100			
With speed	rpm	2000	2400	3000	3600
Volume flow at free air	m³/h	550	675	850	1050
Volume flow at 2 bar g	m³/h	490	600	775	980
Max. over pressure	bar g	2.5	2.5	2.5	2.5
Speed range	rpm	2000 – 3600			
Power requirement at 2 bar g	kW	29.0	32	43.5	52.5
Weight	kg	126			

Technical subject to alteration