

**Data sheet**

Screw compressor  
for bulk trucks



# SKL 1500

## Screw compressor

- Overview page 2
- Dimensions page 4
- Features page 3
- Technical data page 4

## SKL 1500

Screw compressor

### Overview



CVS develops and manufactures compressors specifically designed for installation in trucks. The development is made in close collaboration with our customers. This guarantees the optimum product for your application.

#### The oil free screw compressor

The oil free screw compressor SKL 1500 was developed especially for the high requirements on mounting in bulk trucks.

### Contact person



#### Roger Homberger

Head of Sales

+49 (0) 7623 71 741-24

+49 (0) 151 72 13 01 81

roger.homberger@cvS-eng.de



#### Patrick Zettler

Sales

+49 (0) 7623 71 741-23

+49 (0) 162 25 25 694

patrick.zettler@cvS-eng.de



#### Helen Kreissl

Internal Sales

+49 (0) 7623 71 741-21

helen.kreissl@cvS-eng.de

## SKL 1500

Screw compressor

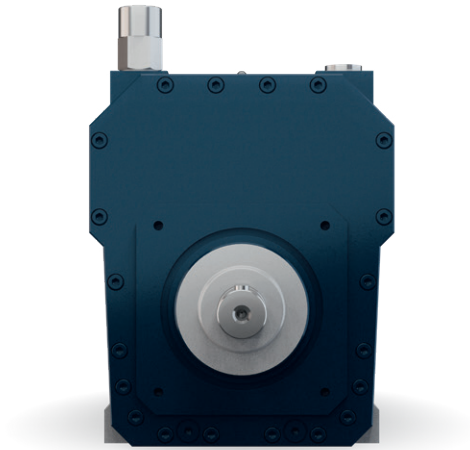
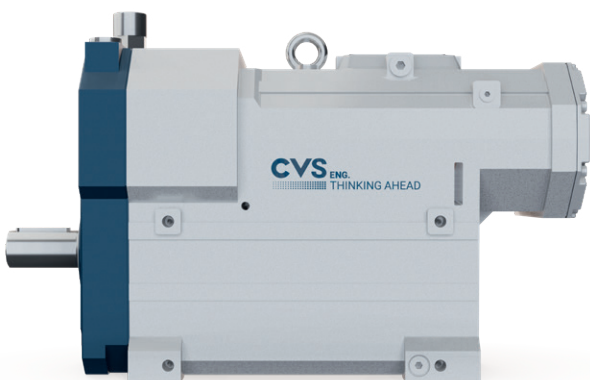
### ■ Features

- High quality screw compressors from CVS for reliable discharge
- Unique and robust design guarantee long lasting performance and high operating hours
- Compact and light-weight design for higher increased payload on the tanker

#### Screw compressors with system

The volume flow rate of the SKL 1500 ranges from 770 up to 1640 m<sup>3</sup>/h at input drive speeds of 1000 up to 2000 rpm. The especially developed design of screw ensures increased efficiency and low discharge air temperatures with low noise operation.

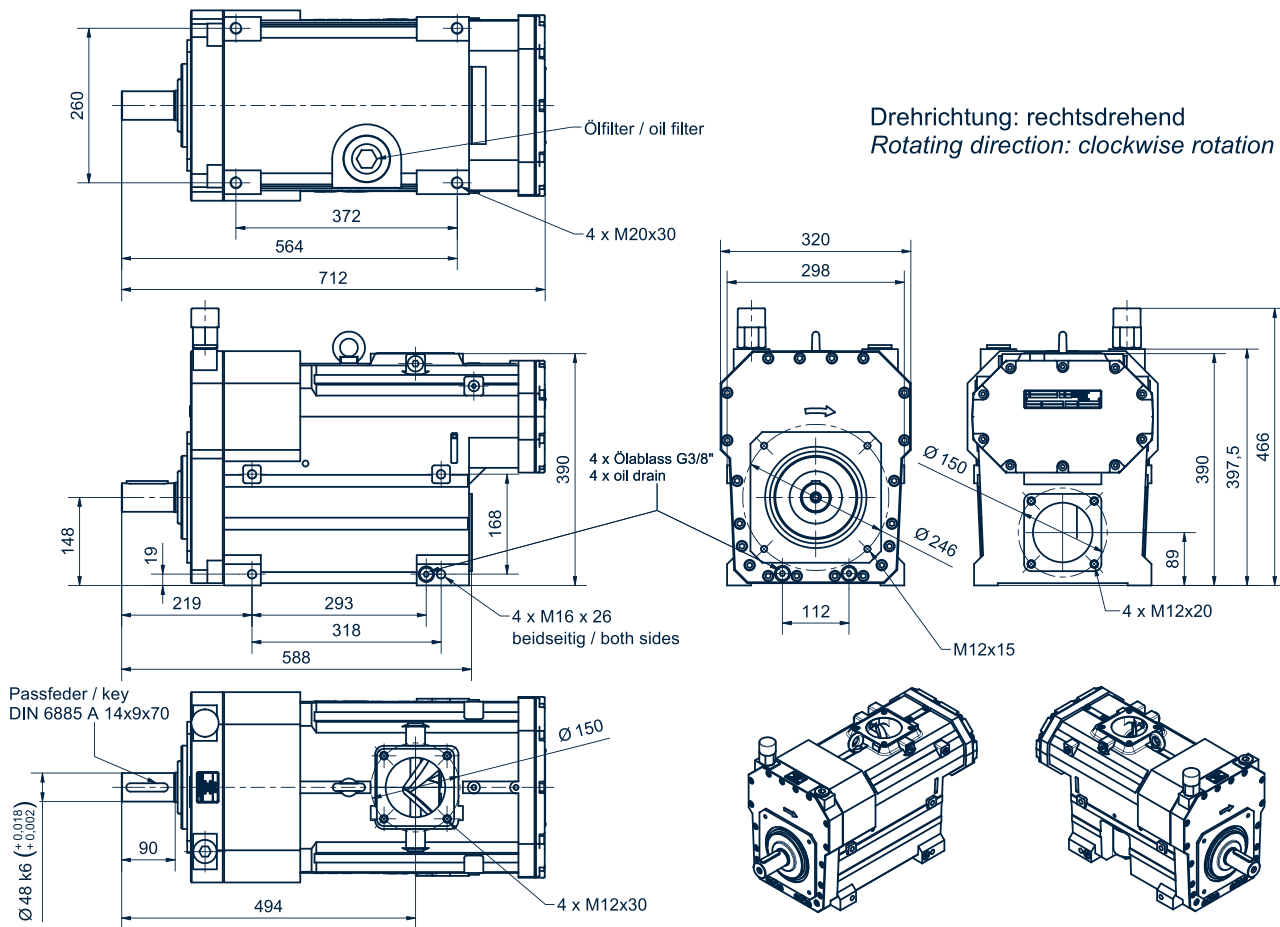
Technical subject to alteration



### ■ Advantages

- High volume flow while maintaining a high pressure possible
- High quality robust design guarantees long lasting performance and longer operating life
- Low weight
- Extensive speed range allows greater flexibility and maximum performance
- 2.5 bar operating pressure over full speed range
- Compact design for ease of installation
- Integrated lubricating oil pump and easy-to-change oil filter

**Dimensions**



**Technical data**

		SKL 1500			
With speed	rpm	1000	1400	1600	2000
Suction volume flow at free air delivery	m <sup>3</sup> /h	770	1139	1301	1640
Suction volume flow at 2 bar g	m <sup>3</sup> /h	690	1063	1217	1560
Max. over pressure	bar g	2.5	2.5	2.5	2.5
Speed range	rpm	1000 - 2000			
Power requirement at 2 bar g	kW	41.0	57.5	66.0	85.0
Weight	kg	185			

Technical subject to alteration