

Data sheet

Liquid ring compressor vacuum-pump
for suction vehicles



VacuStar WR 800 – 1600

Liquid ring compressor vacuum-pump

- Overview page 2
- Dimensions page 4
- Features page 3
- Technical data page 4

VacuStar WR 800 – 1600

Liquid ring compressor vacuum-pump

■ Overview



CVS develops and manufactures compressor vacuum-pumps specifically designed for installation in vacuum trucks. The development is made in close collaboration with our customers. This guarantees the optimum product for your application.

The liquid ring compressor vacuum-pump

The series WR was developed especially for the high requirements on mounting in suction vehicles, municipal vacuum trucks and combination trucks (combined suction and water jetting).

Contact person



Roger Homberger

Head of Sales

+49 (0) 7623 71 741-24

+49 (0) 151 72 13 01 81

roger.homberger@cv-eng.de



Patrick Zettler

Sales

+49 (0) 7623 71 741-23

+49 (0) 162 25 25 694

patrick.zettler@cv-eng.de



Helen Kreissl

Internal Sales

+49 (0) 7623 71 741-21

helen.kreissl@cv-eng.de

WR 800 – 1600

 Liquid ring
 compressor vacuum-pump

■ Features

- High quality liquid ring compressor vacuum-pumps from CVS for higher suction level and more suction power
- Unique and robust design guarantee long lasting performance and high operating hours
- Compact and light-weight liquid ring compressor vacuum-pumps for higher payload on the truck



Liquid ring compressor vacuum-pumps with system

The series WR consists of 5 sizes with a volume flow of up to 4063 m³/h / 2391 cfm.

Technical subject to alteration



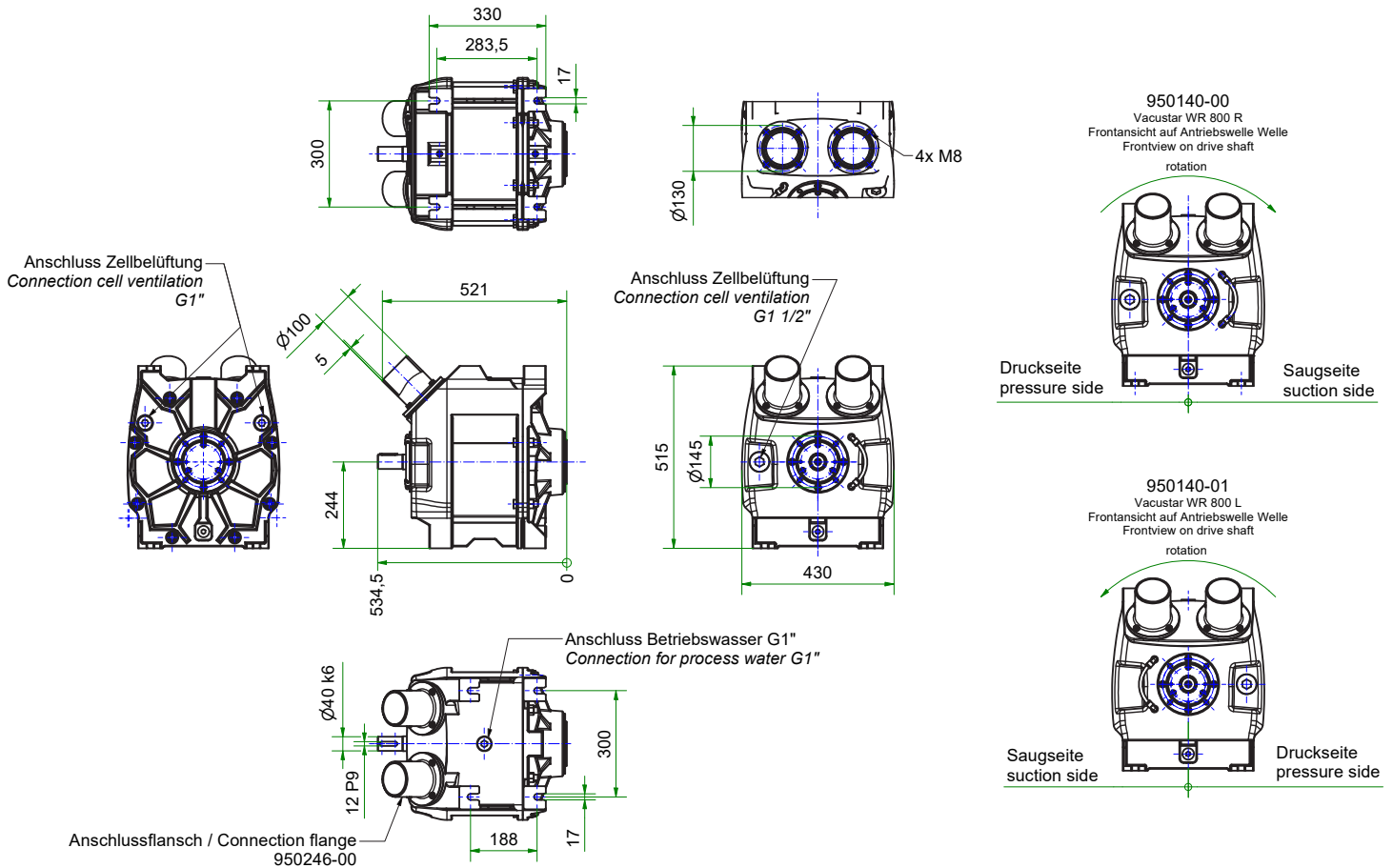
■ Advantages

- Modular design for flexible mounting on the truck
- Mechanical seal
- Low weight design by using aluminum
- Connection flanges can be swiveled
- Installation friendly design
- Only one water drain
- Maintenance-free operation

■ Optional

- Drive via v-belt or hydraulic
- Ceramic-coated housing
- The integrated cell ventilation protects the water ring pump against cavitation > Increased service life.

■ Dimensions



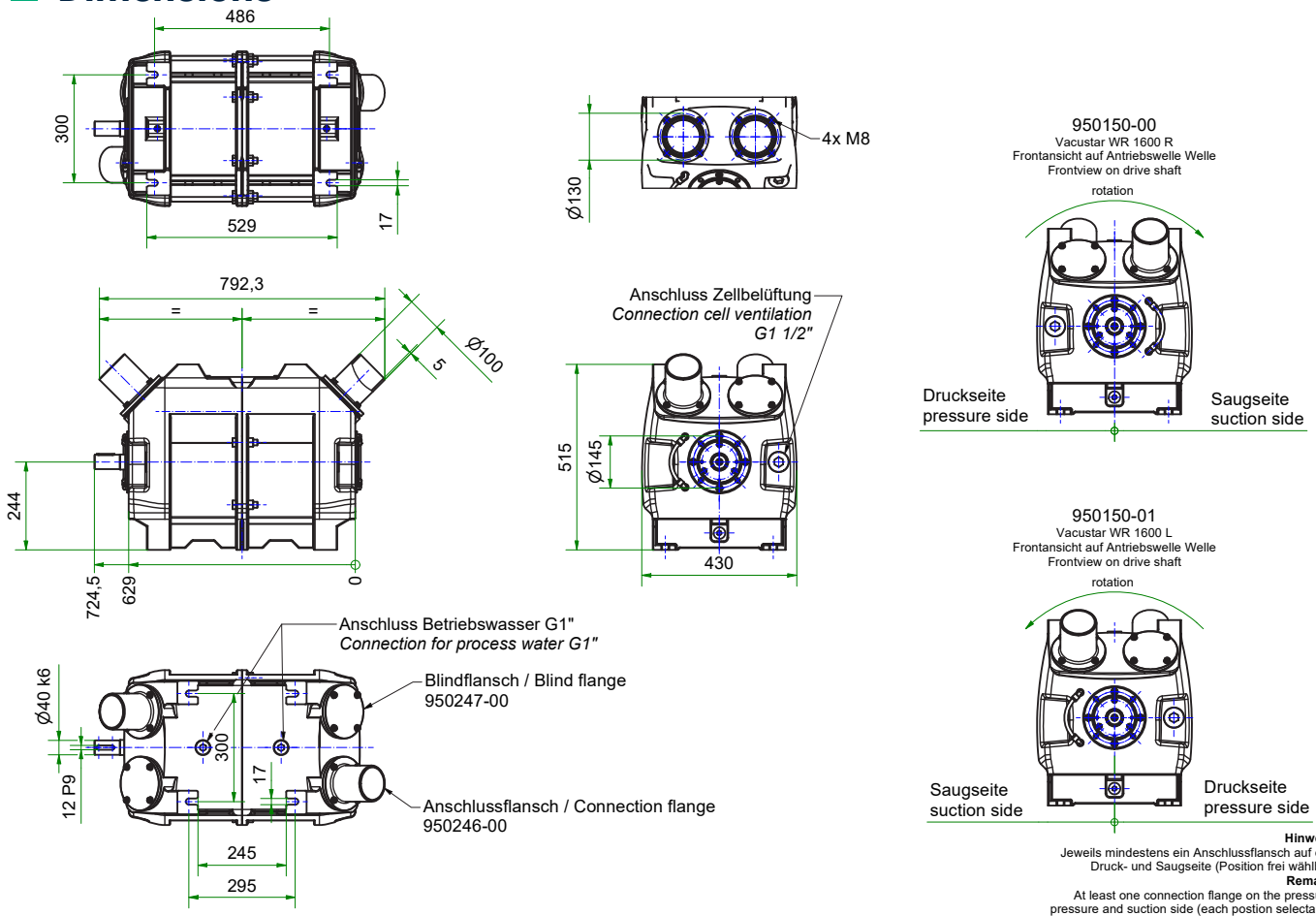
■ Technical data

| | | VacuStar WR 800 |
|---|-------------------------|-----------------|
| Max. suction volume flow | m ³ /h / cfm | 800 / 470 |
| Max. operating pressure | bar g / psig | 2 / 30 |
| Max. operating vacuum* | mbar / HG" | 130 / 26 |
| Nominal speed range | 1/min / rpm | 800 – 1800 |
| Max. power requirement at 0.5 bar g / 7.25 psig | kW / hp | ~27.5 / 37.4 |
| Sound pressure level in 7 m distance at 400 mbar / 18 HG" | dB(A) | ~70 |
| Weight | kg / lb | ~75 / 165 |

* Depending on cooling water temperature

Technical subject to alteration

■ Dimensions



■ Technical data

| | | VacuStar WR 1600 |
|---|-------------------------|------------------|
| Max. suction volume flow | m ³ /h / cfm | 1600 / 940 |
| Max. operating pressure | bar g / psig | 2 / 30 |
| Max. operating vacuum* | mbar / HG" | 130 / 26 |
| Nominal speed range | 1/min / rpm | 800 – 1800 |
| Max. power requirement at 0.5 bar g / 7.25 psig | kW / hp | ~52.0 / 70.7 |
| Sound pressure level in 7 m distance at 400 mbar / 18 HG" | dB(A) | ~70 |
| Weight | kg / lb | ~110 / 240 |

* Depending on cooling water temperature

Technical subject to alteration